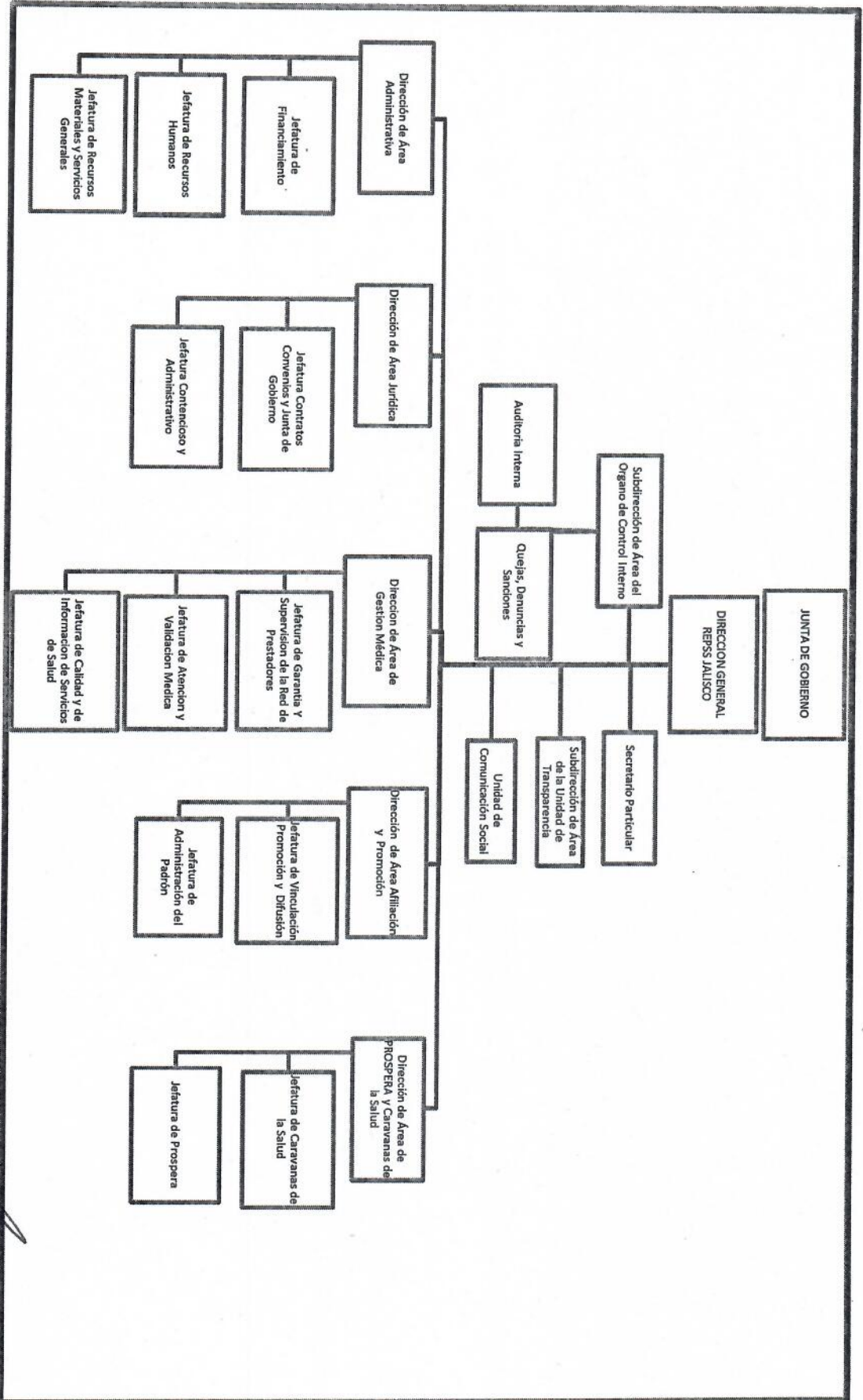


ESTRUCTURA ORGANICA DEL ORGANISMO PÚBLICO DESCENTRALIZADO RÉGIMEN ESTATAL DE PROTECCIÓN SOCIAL EN SALUD DE JALISCO



Handwritten signatures and initials are present on the left side of the page, including a large signature at the top and several smaller ones below it.